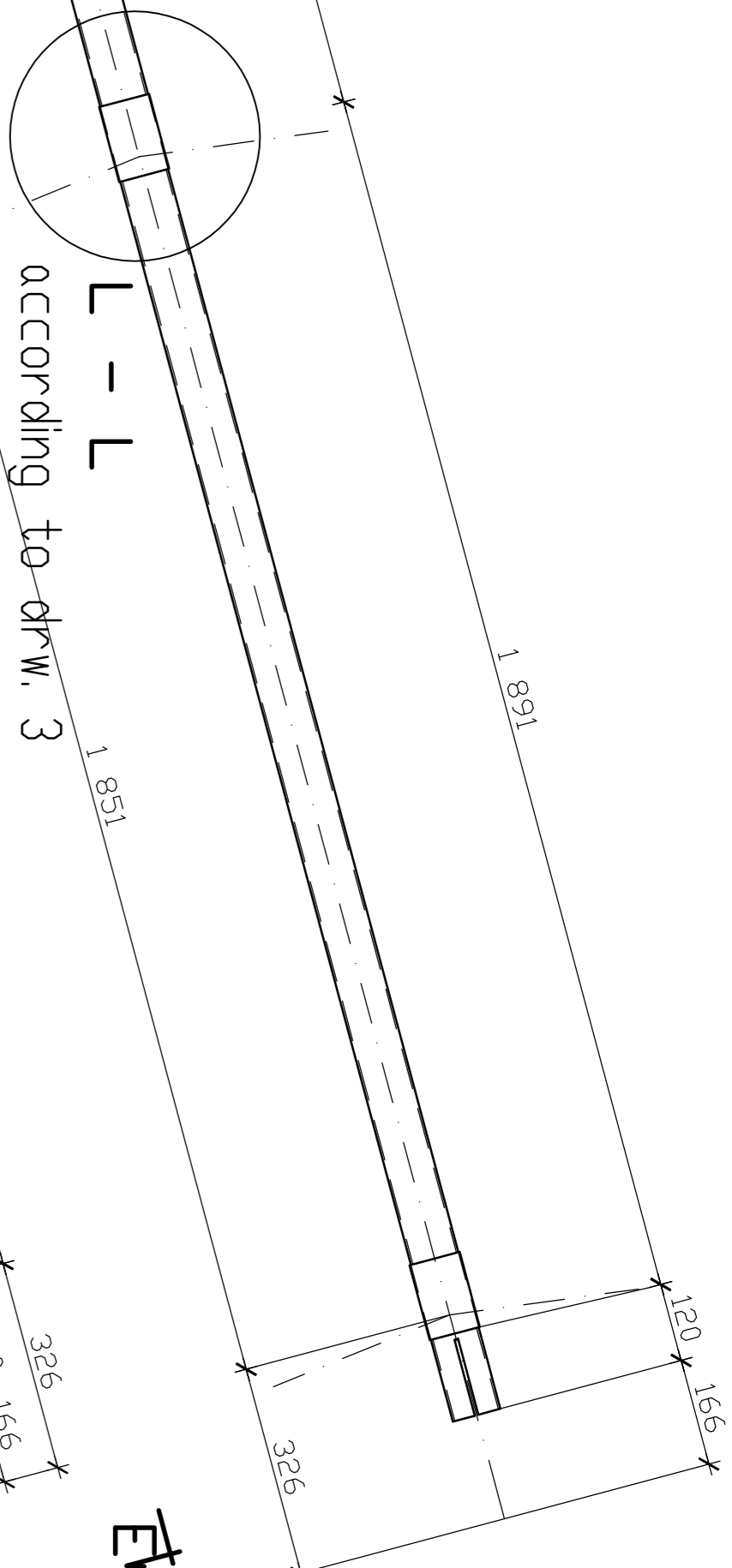
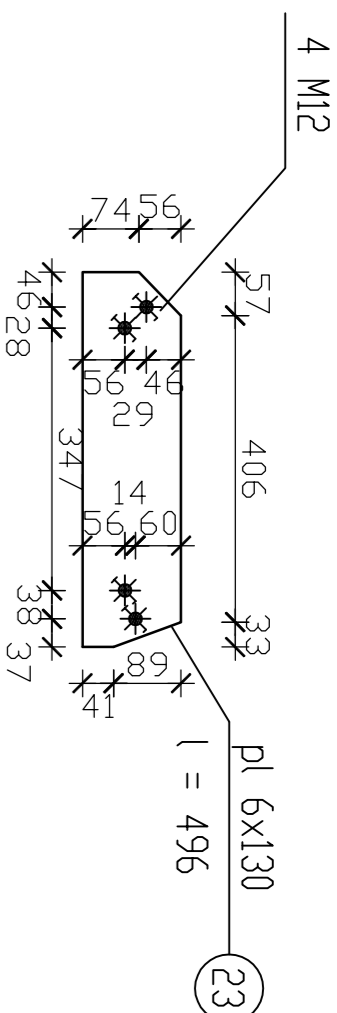
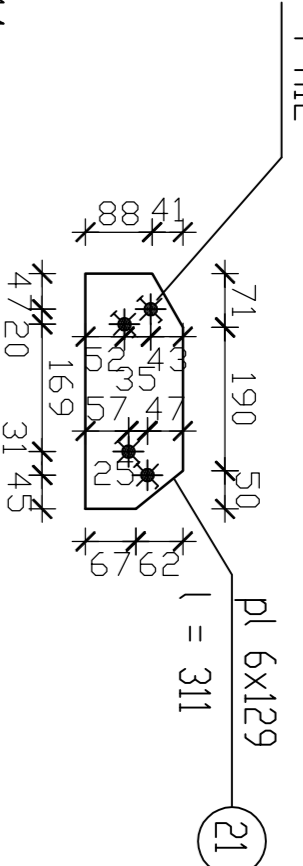
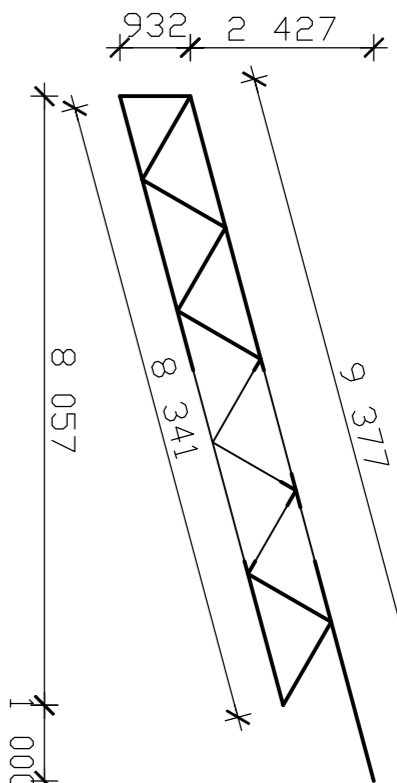


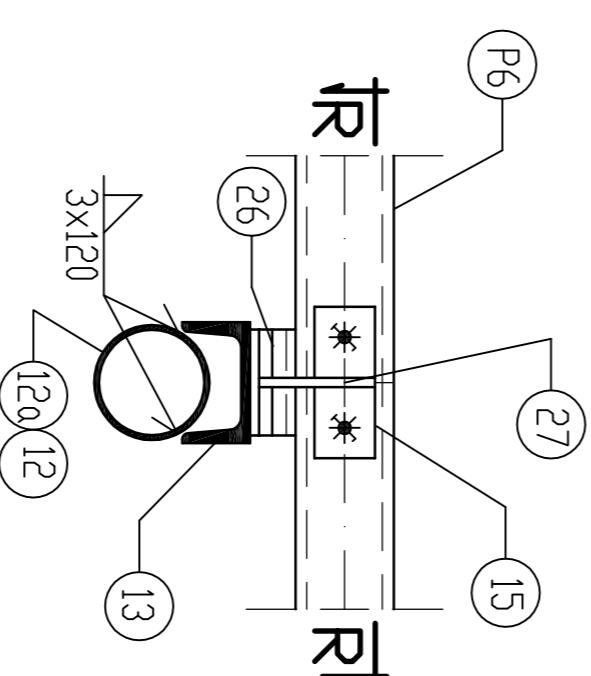
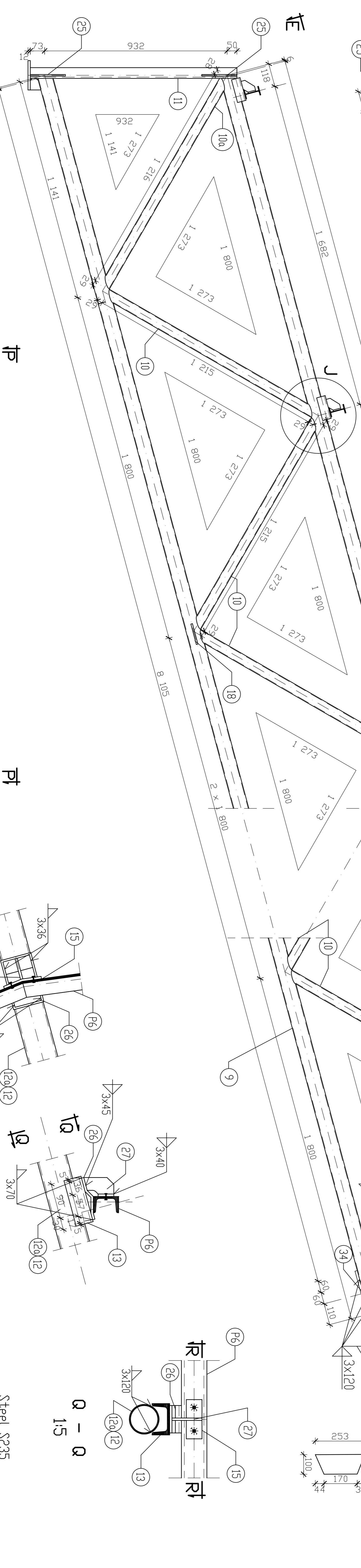
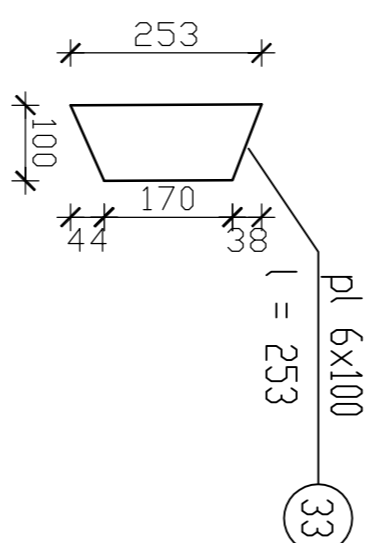
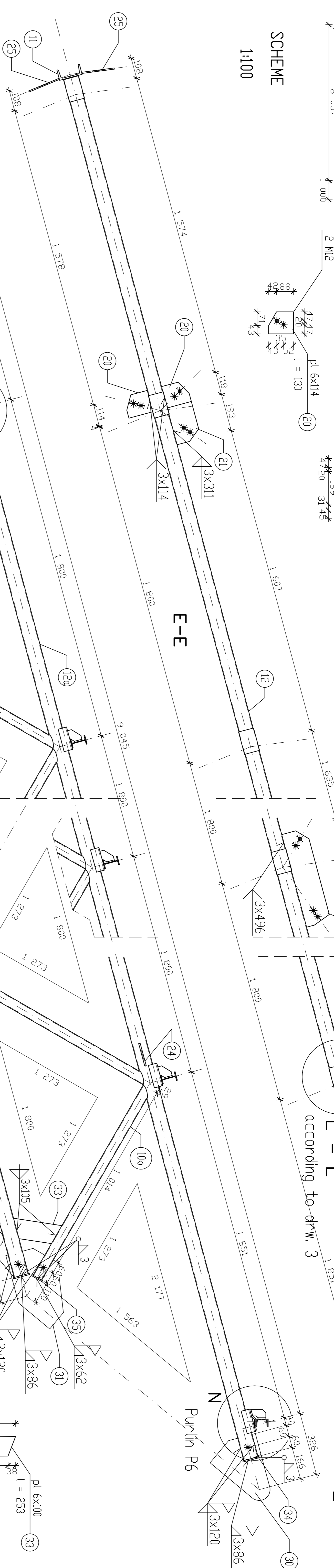
Truss Kb - 8 pcs, Kbl - 4 pcs

A diagram showing a triangle with a side length of 9.377 and an angle of 27 degrees.



~~according to drw. 3~~

1:100



Steel S235

* Bolts M12, cl. 4.8

Elektrodes E4303

Elements 21 and 23 only for Kk1

Elements 30 and 31 according to drw. 4

Location of purlins should be stabilized by washers

<p style="text-align: center;"> CRCQW UNIVERSITY OF TECHNOLOGY – CIVIL ENGINEERING FACULTY Institute of Structure and Building Materials Chair of Metal Structures </p>				
Executor	Tomasz Michowski, Ph.D.	group	sign	date
Verification	Prof. Andrzej Macchowski			
NOTICES	analysed together			
with dwg.	1, 2, 4			
Scale	# draw			
1:100, 1:10, 1:5	3			